



ANNUAL REPORT 2011



SETTLERS PRIMARY SCHOOL ANNUAL SCHOOL REPORT 2011

THE SCHOOL AND ITS COMMUNITY

Located in the southern Perth suburb of Baldivis, within the enclave of Settlers Hills, approximately 46 kms from the city, Settlers Primary School is a new school that is growing on a tranquil hillside, surrounded by new homes. Settlers Primary commenced with an administration building, staffroom, library, kindergarten, pre primary classrooms, an undercover area and canteen. In March of 2007 the Year 1 to 7 students moved from transportable classrooms into the Stage 2 teaching blocks. In 2011, as part of the Building the Educational Revolution saw the final stage of Settlers Primary School being complete with a new classroom block and utility rooms built. Current enrolment is approximately 850 students.

In 2011, we had 37 classes – 32 x Primary and 5 x Pre Primary. We had a full-time Health & Physical Education Specialist, an Art Specialist and a Music Specialist. We also employed a full-time language specialist who taught Indonesian. Settlers Primary School has a strong commitment to values throughout the curriculum and this is reflected through our involvement in the KidsMatter project. Through partnerships with the local community and volunteers, we have been able to implement the Support-A-Reader program and the Kids Hope Mentoring Program. The school values the strong parental and community support that it receives. Excellent parent / teacher support is enjoyed through the open door communication policy. The P & C is extremely active, supporting a school canteen and fund raising for school identified needs. The School Council is also fully operational.



Easter Hat Parade

OUR VISION

To provide students with a safe and caring environment that encourages honesty and respect of self, fellow students and community whilst working cooperatively to enable each student to reach their potential.

OUR BELIEFS

We believe that for learning to occur, students need to be engaged in challenging, dynamic and purposeful experiences that meet individual needs and outcomes.

We believe each student is unique.

We believe in a supportive learning environment.

We believe in the pursuit of excellence.

OUR VALUES

We value parents and community as partners.

- | | |
|-------------------|--|
| Learning | We value the pursuit of knowledge to improve outcomes. |
| Equity | We value each student's knowledge, skills, values, experiences and cultural backgrounds. |
| Care | We value respect and concern for all. |
| Excellence | We value best practice in teaching and learning. |

STAFF PROFILE

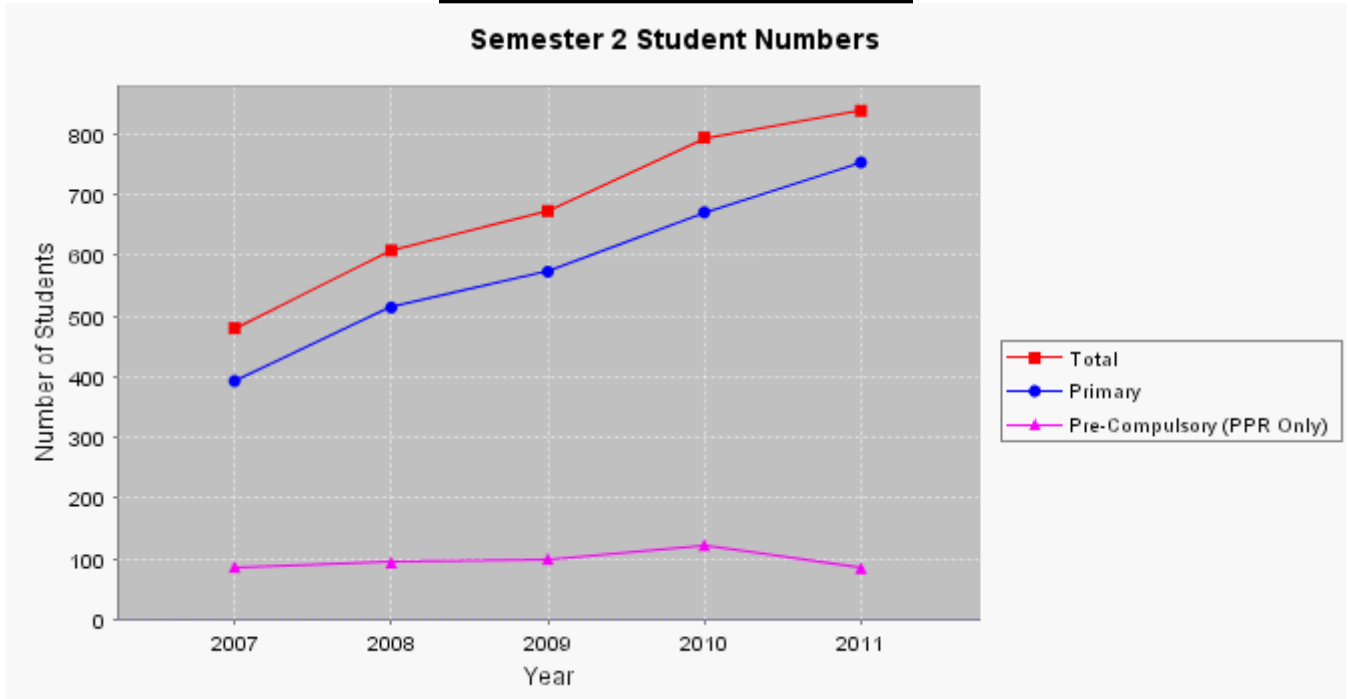
	No	FTE	ATSI No
Administration Staff			
Principals	1	1.0	0
Deputy Principals	3	3.0	0
Total Administration Staff	4	4.0	0
Teaching Staff			
Level 3 Teachers	3	2.8	0
Other Teaching Staff	50	45.6	1
Total Teaching Staff	53	48.4	1
School Support Staff			
Clerical / Administrative	5	3.6	0
Gardening / Maintenance	1	0.6	0
Other Non-Teaching Staff	25	17.3	1
Total School Support Staff	31	21.4	1
Total	88	73.8	2

At the beginning of 2011, we welcomed several new staff into the growing school community. There were some changes to staffing earlier in the year, but the second semester was not disrupted by staff movements. The classroom student numbers remained within the recommended guidelines, hence the growth did not disrupt educational programs or staffing.



Working With iPads

STUDENT NUMBERS- TRENDS



As can be seen in the above graph, our enrolments continued to increase in 2011.

Semester 2	2007	2008	2009	2010	2011
Pre-Compulsory (PPR Only)	87	94	100	123	85
Primary	393	514	573	671	753
Total	480	608	673	794	838

STUDENT PERFORMANCE SUMMARY 2011

NATIONAL ASSESSMENT PROGRAM FOR LITERACY AND NUMERACY 2011

The tables below show the percentage of students in Years 3, 5 and 7 who achieved or exceeded the National Minimum Standard in Numeracy, Writing, Grammar and Punctuation, Reading and Spelling.

NAPLAN National Minimum Standard (NMS)	NAPLAN - Numeracy								
	2009			2010			2011		
	Year 3	Year 5	Year 7	Year 3	Year 5	Year 7	Year 3	Year 5	Year 7
Above NMS	78%	66%	71%	76%	84%	78%	70%	73%	69%
At NMS	15%	27%	21%	19%	15%	19%	25%	19%	28%
Below NMS	7%	8%	7%	5%	1%	3%	5%	7%	3%

Percentages may not add up to 100% due to rounding.

NAPLAN National Minimum Standard (NMS)	NAPLAN - Reading								
	2009			2010			2011		
	Year 3	Year 5	Year 7	Year 3	Year 5	Year 7	Year 3	Year 5	Year 7
Above NMS	78%	66%	57%	79%	82%	85%	75%	74%	75%
At NMS	18%	20%	36%	12%	11%	11%	17%	17%	18%
Below NMS	4%	14%	7%	9%	7%	4%	8%	9%	6%

Percentages may not add up to 100% due to rounding.

NAPLAN National Minimum Standard (NMS)	NAPLAN - Writing								
	2009			2010			2011		
	Year 3	Year 5	Year 7	Year 3	Year 5	Year 7	Year 3	Year 5	Year 7
Above NMS	90%	76%	79%	90%	84%	92%	93%	78%	70%
At NMS	8%	16%	3%	3%	13%	7%	4%	13%	21%
Below NMS	1%	8%	17%	7%	3%	1%	3%	9%	9%

Percentages may not add up to 100% due to rounding.

NAPLAN National Minimum Standard (NMS)	NAPLAN - Spelling								
	2009			2010			2011		
	Year 3	Year 5	Year 7	Year 3	Year 5	Year 7	Year 3	Year 5	Year 7
Above NMS	86%	72%	65%	79%	82%	76%	83%	74%	70%
At NMS	11%	19%	14%	17%	10%	15%	12%	15%	24%
Below NMS	3%	9%	21%	3%	7%	8%	5%	11%	6%

Percentages may not add up to 100% due to rounding.

NAPLAN National Minimum Standard (NMS)	NAPLAN - Grammar & Punctuation								
	2009			2010			2011		
	Year 3	Year 5	Year 7	Year 3	Year 5	Year 7	Year 3	Year 5	Year 7
Above NMS	75%	67%	55%	78%	73%	67%	82%	78%	63%
At NMS	17%	23%	34%	9%	22%	21%	13%	14%	21%
Below NMS	8%	10%	10%	12%	5%	12%	5%	9%	15%

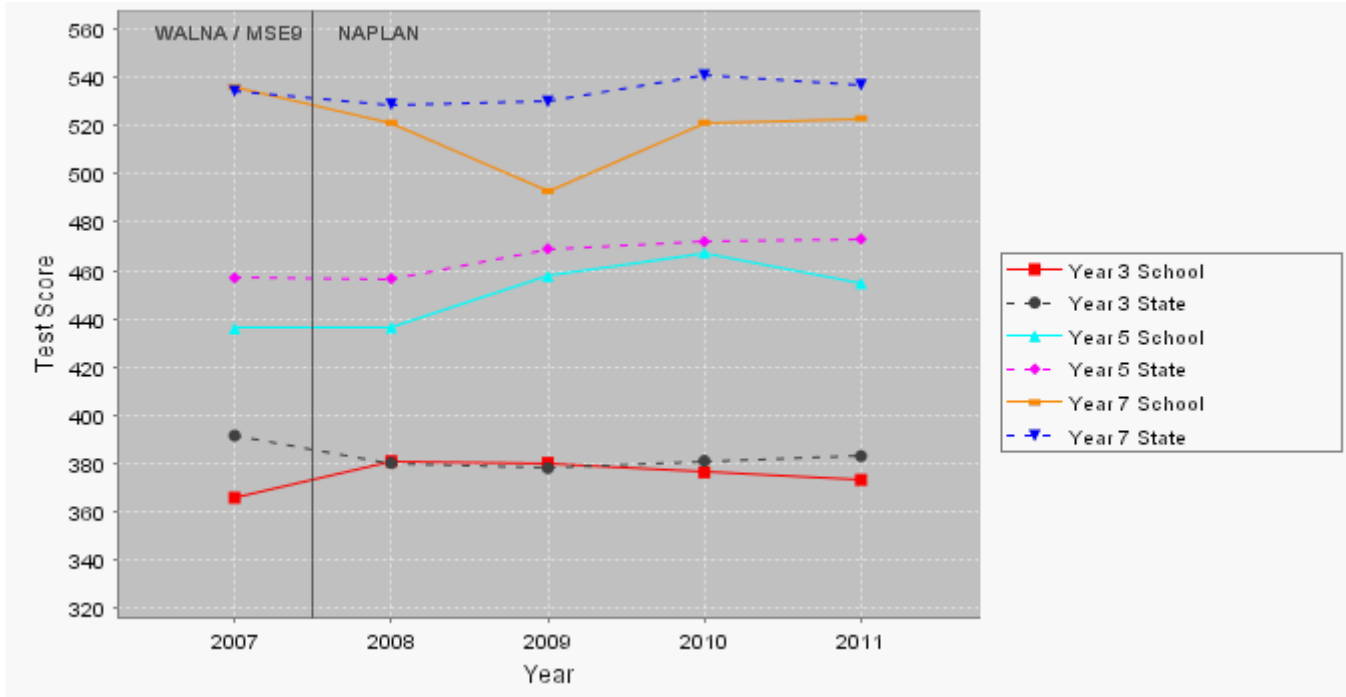
Percentages may not add up to 100% due to rounding.

Although the schools results show a significant percentage of students above the National Standard, plans have been developed to increase this. This was done following a detailed analysis of results by all teachers.

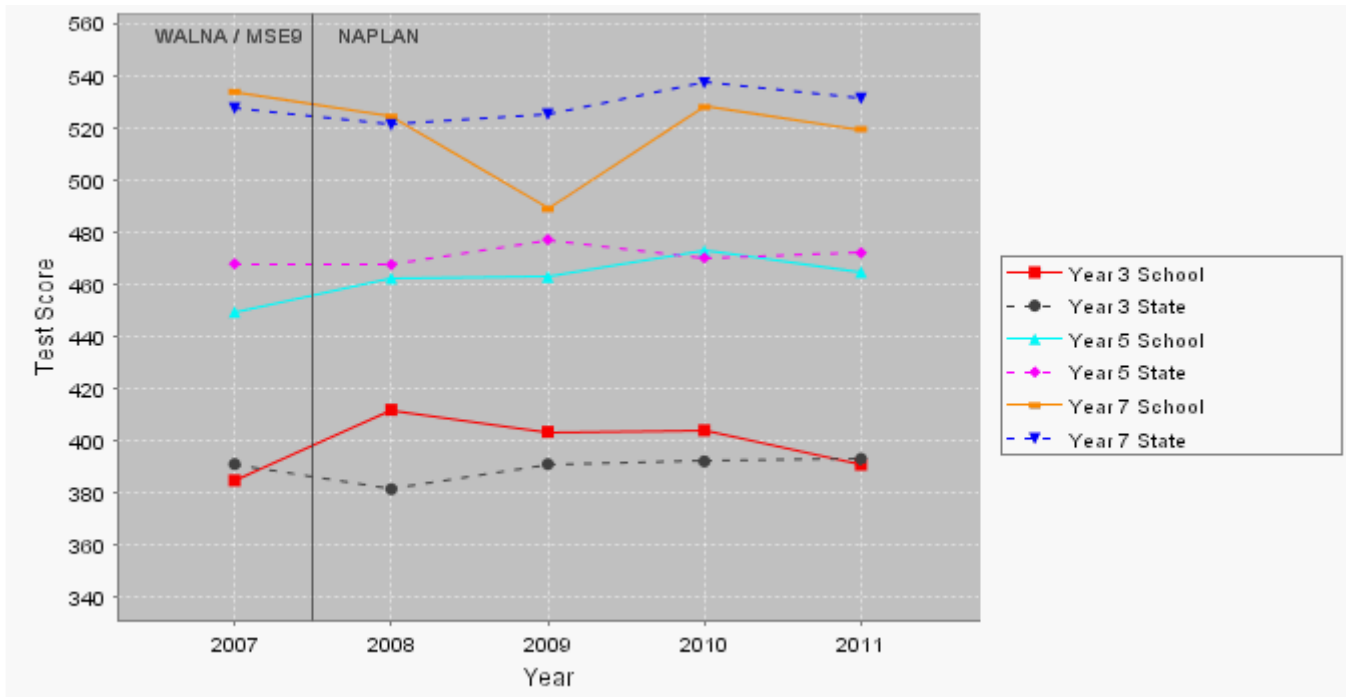
LONGITUDINAL SUMMARY

The graphs below show a comparison between student performances at Settlers Primary with student performance at a state level. It is important to note that these comparisons are made between the Western Australian Literacy and Numeracy Assessment (WALNA), Monitoring Standards in Education (MSE) and National Assessment Program Literacy and Numeracy (NAPLAN). The downward trend in both Numeracy and Reading is noted and whole school plans to change this developed late in 2011 for implementation in 2012.

Numeracy



Reading



MONITORING STANDARDS IN EDUCATION (MSE) – SCIENCE

Schools are chosen at random to participate in MSE testing. While the table below indicates acceptable levels of achievement, a comparison with 'like schools' highlights a need to increase the number of students achieving in the top 20 % and a reduction of students in the bottom 20%.

Percentage of students achieving at or above the WAMSE Test Standard

	Science			Society & Environment		
	2009	2010	2011	2009	2010	2011
Year 5	30%	54%	46%		61%	44%
Year 7	31%	55%	41%	22%	45%	34%

PERCENTAGES OF STUDENTS IN TOP 20%, MIDDLE 60%, BOTTOM 20% OF THE STATE AND LIKE SCHOOLS

State	Year 5 Science					
	School			Like Schools		
	2009	2010	2011	2009	2010	2011
Top 20%	11 %	26 %	20 %	23 %	18 %	21 %
Middle 60%	67 %	64 %	59 %	63 %	63 %	65 %
Bottom 20%	22 %	10 %	21 %	14 %	19 %	13 %

State	Year 5 Society & Environment					
	School		Like Schools			
		2010	2011		2010	2011
Top 20%		33 %	17 %		24 %	24 %
Middle 60%		60 %	68 %		59 %	63 %
Bottom 20%		8 %	16 %		16 %	13 %

State	Year 7 Science					
	School			Like Schools		
	2009	2010	2011	2009	2010	2011
Top 20%	12 %	14 %	13 %	27 %	23 %	21 %
Middle 60%	62 %	64 %	61 %	59 %	62 %	63 %
Bottom 20%	27 %	23 %	26 %	14 %	15 %	15 %

State	Year 7 Society & Environment					
	School			Like Schools		
	2009	2010	2011	2009	2010	2011
Top 20%	4 %	16 %	10 %	29 %	24 %	22 %
Middle 60%	65 %	61 %	68 %	58 %	61 %	62 %
Bottom 20%	30 %	22 %	23 %	14 %	16 %	16 %

HIGHLIGHTS OF 2011

Academic standards and moderation across classes
Book Fair
Baldivis Children's Forest
AGQTP – Teacher Professional Development
Support A Reader
Parent Information Sessions
NAIDOC Week Incursion
Eagles/Fever Cup
Glory Cup
Swimming Carnival
Athletics Carnival
Canberra/ Sydney Experience 2011
Point Peron Experience
Literacy and Numeracy Week
Scitech Excursion
Westpac Maths Competition
ActiveDance 123
Fremantle Prison Excursion
Penguin Island Excursion
Jeans for Genes Day
Marine Education
Foundation Day Dress Up Day
Indonesian Consulate Excursion

Book Week
KidsMatter
WA Museum visits
Perth Zoo Excursion
Walk To School / Ride To School
Primary Science
Graduation Dinner Dance
ANZAC Service
Harmony Week – Sumardi Incursion
Interschool Sports
Guitar Group
"Wicked" Musical
Australian Mathematics Competition for the Westpac Awards
Harmony Day
Clean Up Australia Day
John Forest National Park Excursion
Ace Cinemas Movie Experience
SIDS - Red Nose Day
Catholic Scripture classes
Primary Music Institute – keyboard
Point Peron Experience
Summer Carnival

CLASSROOM FIRST INNOVATION GRANT

In response to our analysis of Settlers Primary School's NAPLAN results, the school submitted an application for a Classroom First Innovation Grant. This project was initiated by Mrs Sarah McCormick and Mrs Pippa Dennerley. Their application was successful and is aimed at increasing our junior primary boys achievements through the use of ICT and in particular the use of iPad's in the class. The project is not limited to boys with all students having access to individual iPads. The initial results are promising and the project is be to be expanded in 2012.



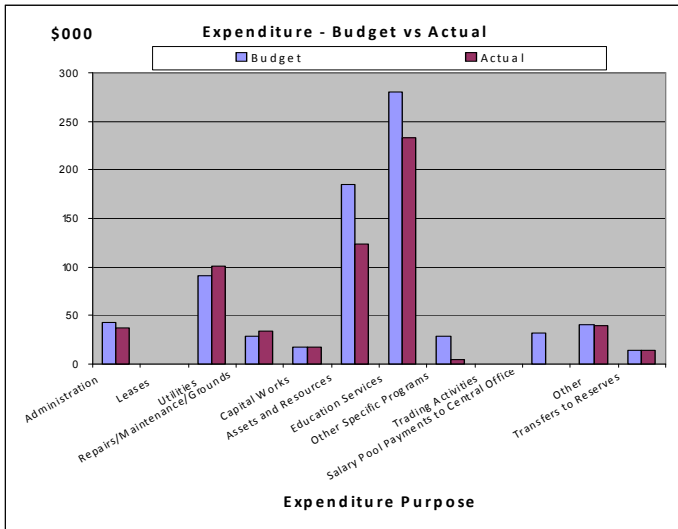
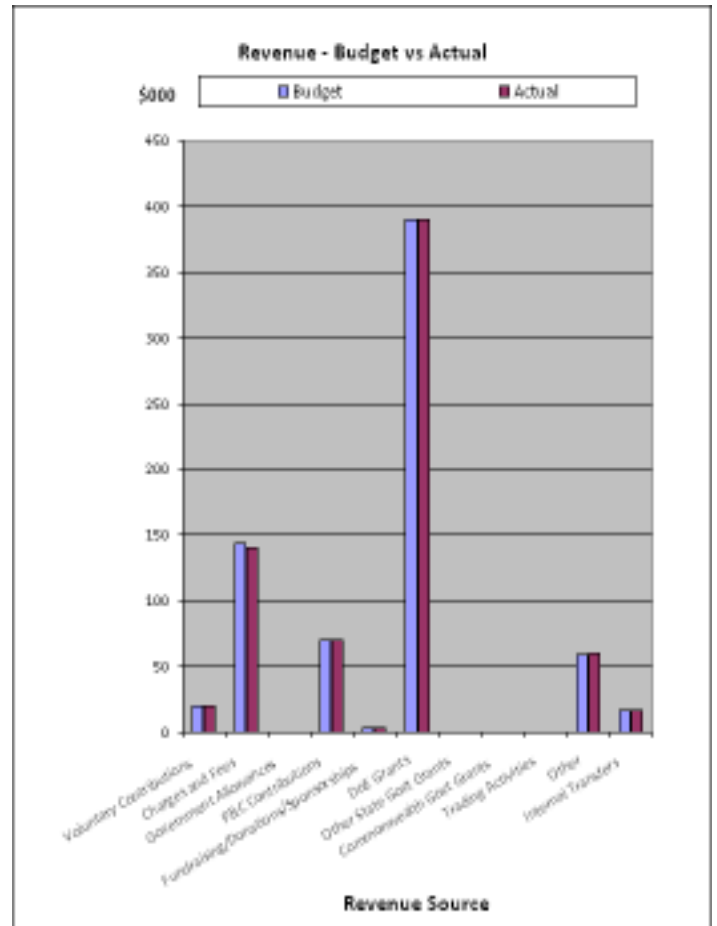
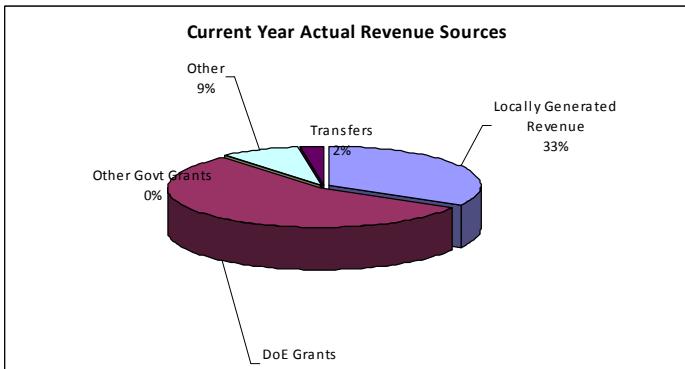
Working With Boys - iPad Achievements

SCHOOL FINANCES 2011

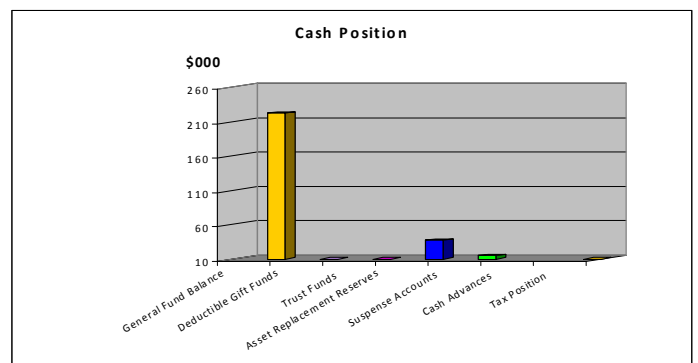
FINANCIAL SUMMARY AS AT 31ST DECEMBER 2011

	Revenue - Cash	Budget	Actual
1	Voluntary Contributions	\$20,520.00	\$20,315.00
2	Charges and Fees	\$143,177.00	\$140,715.00
3	Government Allowances		
4	P&C Contributions	\$70,317.00	\$70,317.00
5	Fundraising/Donations/Sponsorships	\$2,882.00	\$2,971.00
6	DoE Grants	390,075.00	\$390,075.00
7	Other State Govt Grants		
8	Commonwealth Govt Grants		
9	Trading Activities	\$	\$
10	Other	\$ 58,528.00	\$59,972.80
11	Internal Transfers	\$16,859.00	\$16,859.00
	Total	\$ 02,358.00	701,224.80
	Opening Balance	\$124,823.00	\$124,822.76
	Total Funds Available	\$827,181.00	\$826,047.56

	Expenditure	Budget	Actual
1	Administration	\$ 42,646.00	\$ 37,332.33
2	Leases	\$	\$
3	Utilities	\$ 91,175.00	\$ 100,854.91
4	Repairs/Maintenance/Grounds	\$ 28,049.00	\$ 34,018.67
5	Capital Works	\$ 17,350.00	\$ 17,350.00
6	Assets and Resources	\$ 184,891.00	\$ 123,657.00
7	Education Services	\$ 280,329.00	\$232,949.01
8	Other Specific Programs	\$ 28,030.00	\$ 3,891.00
9	Trading Activities		
10	Salary Pool Payments to Central Office	\$ 31,747.00	
11	Other	\$ 40,914.00	\$ 39,488.13
12	Transfers to Reserves	\$ 14,000.00	\$ 14,000.00
	Total	\$ 759,131.00	\$ 03,541.05



Cash Position as at:		31/12/2011
Bank Balance		\$271,427.95
Made up of:		
1	General Fund Balance	\$222,506.51
2	Deductible Gift Funds	
3	Trust Funds	
4	Asset Replacement Reserves	\$37,325.70
5	Suspense Accounts	\$14,999.74
6	Cash Advances	
7	Tax Position	\$3,404.00
Total Bank Balance		\$278,235.95



TEACHER PROFESSIONAL LEARNING 2011

In 2011 Teaching and Non-Teaching staff at Settlers Primary School attended a range of Professional Learning courses to assist the teaching and learning program. The total cost for the Professional Learning was \$12 690.32

STUDENT ATTENDANCE SUMMARY FOR SETTLER'S PRIMARY SCHOOL 2011

Below outlines the student attendance summary for 2011. The graphs indicate that we are well above the average by comparison to State Attendance. Individual children at risk are targeted by the attendance deputy.

STUDENT PARTICIPATION 2011 – ATTENDANCE – OVERALL

Primary Attendance Rates

	Attendance Rate	
	School	State
2009	95.1%	92.9%
2010	94.4%	92.9%
2011	94.8%	92.7%

Attendance % - Primary Year Levels

	Attendance Rate						
	Y01	Y02	Y03	Y04	Y05	Y06	Y07
2009	94%	96%	93%	96%	96%	94%	96%
2010	94%	94%	95%	95%	94%	95%	94%
2011	95%	94%	95%	95%	95%	95%	95%
State 2011	92%	93%	93%	93%	93%	93%	92%

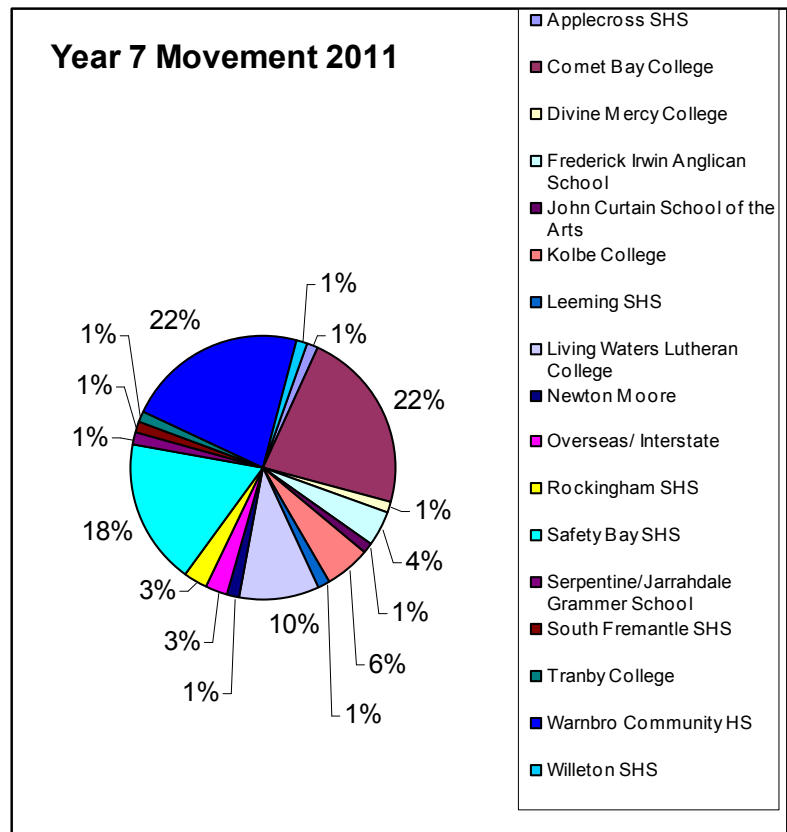
In 2011, student attendance showed in improvement on our 2010 performance. We look forward to continued improvement in 2012.



Touch Rugby Clinic

YEAR 7 MOVEMENT 2011 – 72 STUDENTS

School	No's
Applecross SHS	1
Comet Bay College	16
Divine Mercy College	1
Frederick Irwin Anglican School	3
John Curtain School of the Arts	1
Kolbe College	4
Leeming SHS	1
Living Waters Lutheran College	7
Newton Moore	1
Overseas/ Interstate	2
Rockingham SHS	2
Safety Bay SHS	13
Serpentine/Jarrahdale Grammar School	1
South Fremantle SHS	1
Tranby College	1
Warnbro Community HS	16
Willetton SHS	1
	72



ANALYSIS OF DATA

Settlers Primary School uses a variety of information to judge its performance. This includes previous WALNA information, NAPLAN and MSE testing as depicted in this report, formal semester reports, internal assessments, teacher judgments and anecdotal information. The data indicates that while there has been an improvement across some year levels, components of English and Mathematics must remain as priorities particularly writing and spelling.

Accordingly, the analysis of data has led to further strategic planning as part of the overall school plan.

PRIORITIES FOR 2011 (BASED ON A TWO YEAR PLAN 2010-2012)

Based on the data analysed and teacher professional judgments, the priorities for 2010 – 2012 are:

- English – Writing & Spelling
- Mathematics – Number
- Kids Matter

STRATEGIC PLANNING

The strategic plan is available for the general community from the main office. The Strategic Plan connects planning at the whole school level and sets directions for improvement based on available data. The Strategic Plan has been endorsed by the School Council and in turn provides the basis for the Operational Plan and classroom planning.