



ANNUAL REPORT 2012



SETTLERS PRIMARY SCHOOL

ANNUAL SCHOOL REPORT 2012

THE SCHOOL AND ITS COMMUNITY

Located in the southern Perth suburb of Baldivis, within the enclave of Settlers Hills, approximately 46 kms from the city, Settlers Primary School is a new school that is growing on a tranquil hillside, surrounded by new homes. Settlers Primary commenced with an administration building, staffroom, library, kindergarten, pre primary classrooms, an undercover area and canteen. In March of 2007 the Year 1 to 7 students moved from transportable classrooms into the Stage 2 teaching blocks. In 2011, as part of the Building the Educational Revolution saw the final stage of Settlers Primary School being complete with a new classroom block and utility rooms built. Current enrolment is approximately 1030 students.

In 2012, we had 42 classes – 32 x Primary, 4 x Pre Primary and 6 x Kindergarten. We had a full-time Health & Physical Education Specialist, an Art Specialist, a Music Specialist and a Science specialist. We also employed a full-time language specialist who taught Indonesian. Settlers Primary School has a strong commitment to values throughout the curriculum and this is reflected through our involvement in the KidsMatter project. Through partnerships with the local community and volunteers, we have been able to implement the Support-A-Reader program and the School Volunteer Program. The school values the strong parental and community support that it receives. Excellent parent / teacher support is enjoyed through the open door communication policy. The P & C is extremely active, supporting a school canteen and fund raising for school identified needs. The School Council is also fully operational.



Year 7 Canberra Trip 2012

OUR VISION

Excellence, Success, Citizenship and Security

MISSION STATEMENT

To provide every student with;

- The opportunity to excel (excellence)
- Fundamentals for life success (Success)
- Skills to positively contribute to society (Citizenship)
- A safe, happy and caring environment (Security).

OUR VALUES

We believe in...

Sharing responsibilities – sharing leadership, building and utilising teaching and leadership experience, building a culture of sharing and responsibility and employing collaborative practices.

Holding high expectations – Ensuring a high level of student expectation, structuring teaching for student success, ensuring teacher efficacy, ensuring an orderly environment and engendering pride.

Focussing on what matters most – Focussing on Literacy and Numeracy, focussing on pastoral care, using data to drive improvement and ensuring initiatives support the overall direction of the school.

STAFF PROFILE 2012

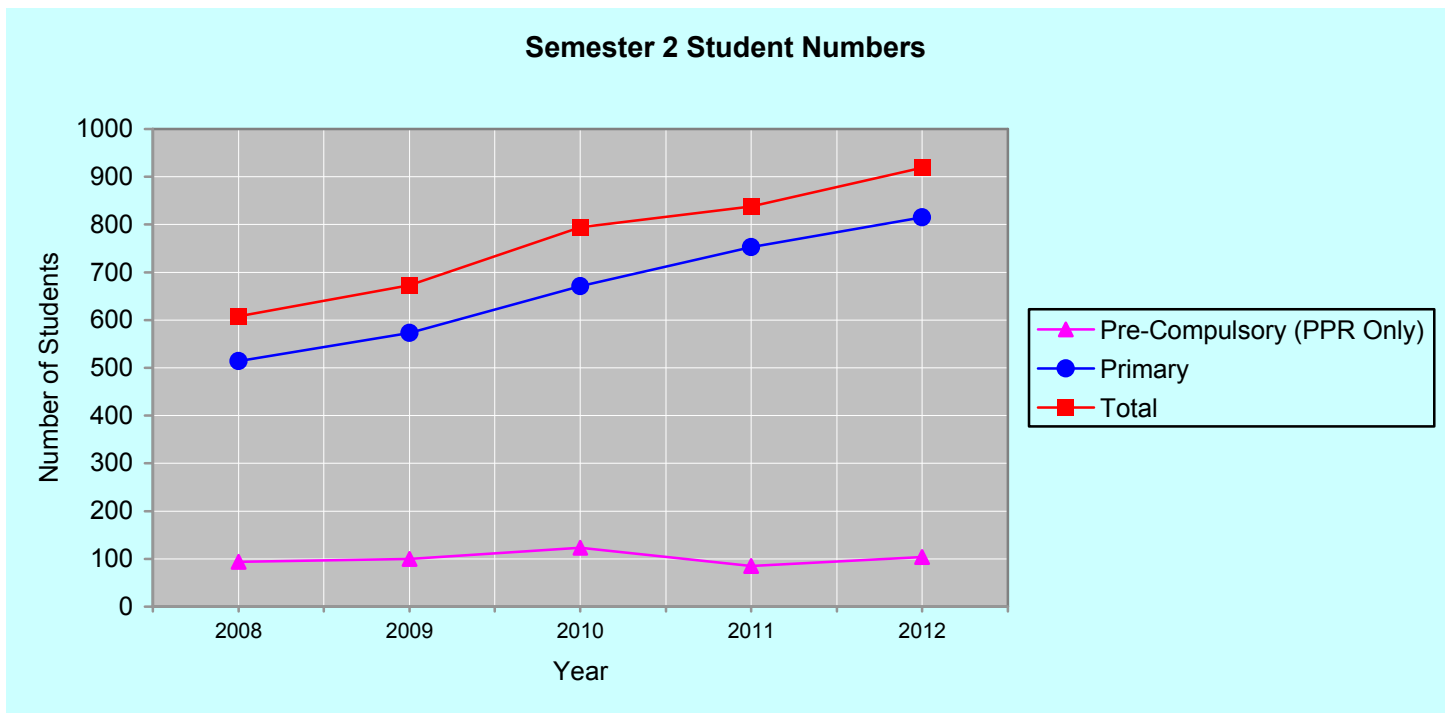
	No	FTE	ATSI No
Administration Staff			
Principals	1	1.0	0
Deputy Principals	3	3.0	0
Total Administration Staff	4	4.0	0
Teaching Staff			
Level 3 Teachers	1	0.8	0
Other Teaching Staff	52	48.2	1
Total Teaching Staff	53	49.0	1
School Support Staff			
Clerical / Administrative	5	3.6	0
Gardening / Maintenance	1	0.6	0
Other Non-Teaching Staff	24	18.0	1
Total School Support Staff	30	22.2	1
Total	87	75.2	2

At the beginning of 2012, we welcomed several new staff into the growing school community. There were some changes to staffing earlier in the year and the second half of the year saw some staff move to promotional positions. The classroom student numbers remained within the recommended guidelines, hence the growth did not disrupt educational programs or staffing.



Staff getting into the spirit of Book Week 2012.

STUDENT NUMBERS- TRENDS



As can be seen in the above graph, our enrolments continued to increase in 2012.

Semester 2	2008	2009	2010	2011	2012
Pre-Compulsory (PPR Only)	94	100	123	85	104
Primary	514	573	671	753	815
Total	608	673	794	838	919

STUDENT PERFORMANCE SUMMARY 2012

NATIONAL ASSESSMENT PROGRAM FOR LITERACY AND NUMERACY 2012

The tables below show the percentage of students in Years 3, 5 and 7 who achieved or exceeded the National Minimum Standard in Numeracy, Writing, Grammar and Punctuation, Reading and Spelling.

NAPLAN National Minimum Standard (NMS)	NAPLAN - Numeracy								
	2010			2011			2012		
	Year 3	Year 5	Year 7	Year 3	Year 5	Year 7	Year 3	Year 5	Year 7
Above NMS	76%	84%	78%	70%	73%	69%	78%	73%	62%
At NMS	19%	15%	19%	25%	19%	28%	15%	18%	32%
Below NMS	5%	1%	3%	5%	7%	3%	7%	9%	6%

Percentages may not add up to 100% due to rounding.

NAPLAN National Minimum Standard (NMS)	NAPLAN - Reading								
	2010			2011			2012		
	Year 3	Year 5	Year 7	Year 3	Year 5	Year 7	Year 3	Year 5	Year 7
Above NMS	79%	82%	85%	75%	74%	75%	82%	74%	79%
At NMS	12%	11%	11%	17%	17%	18%	12%	15%	16%
Below NMS	9%	7%	4%	8%	9%	6%	6%	11%	5%

Percentages may not add up to 100% due to rounding.

NAPLAN National Minimum Standard (NMS)	NAPLAN - Writing								
	2010			2011			2012		
	Year 3	Year 5	Year 7	Year 3	Year 5	Year 7	Year 3	Year 5	Year 7
Above NMS	90%	84%	92%	93%	78%	70%	92%	82%	70%
At NMS	3%	13%	7%	4%	13%	21%	5%	8%	22%
Below NMS	7%	3%	1%	3%	9%	9%	3%	9%	7%

Percentages may not add up to 100% due to rounding.

NAPLAN National Minimum Standard (NMS)	NAPLAN - Spelling								
	2010			2011			2012		
	Year 3	Year 5	Year 7	Year 3	Year 5	Year 7	Year 3	Year 5	Year 7
Above NMS	79%	82%	76%	83%	74%	70%	86%	78%	74%
At NMS	17%	10%	15%	12%	15%	24%	12%	16%	15%
Below NMS	3%	7%	8%	5%	11%	6%	2%	5%	11%

Percentages may not add up to 100% due to rounding.

NAPLAN National Minimum Standard (NMS)	NAPLAN - Grammar & Punctuation								
	2010			2011			2012		
	Year 3	Year 5	Year 7	Year 3	Year 5	Year 7	Year 3	Year 5	Year 7
Above NMS	78%	73%	67%	82%	78%	63%	79%	63%	80%
At NMS	9%	22%	21%	13%	14%	21%	12%	21%	14%
Below NMS	12%	5%	12%	5%	9%	15%	8%	15%	6%

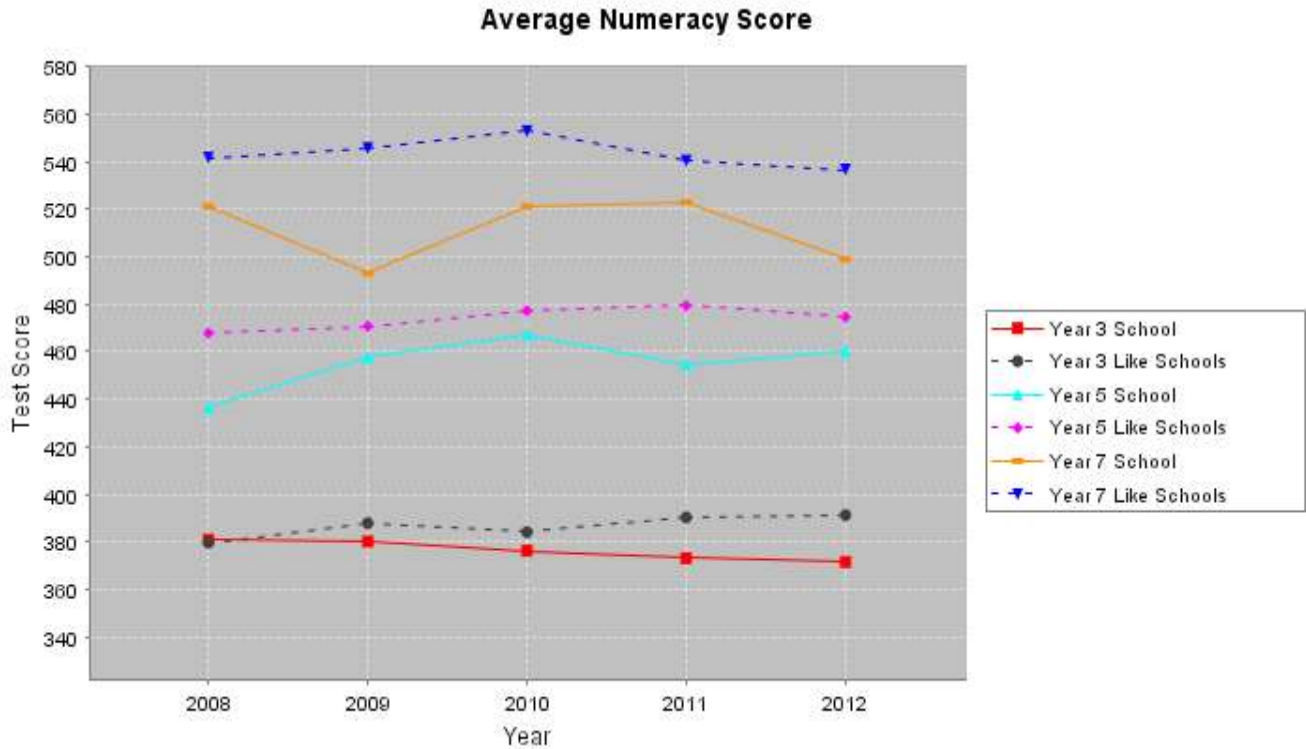
Percentages may not add up to 100% due to rounding.

Although the schools results show a significant percentage of students above the National Standard, plans have been developed to increase this. This was done following a detailed analysis of results by all teachers.

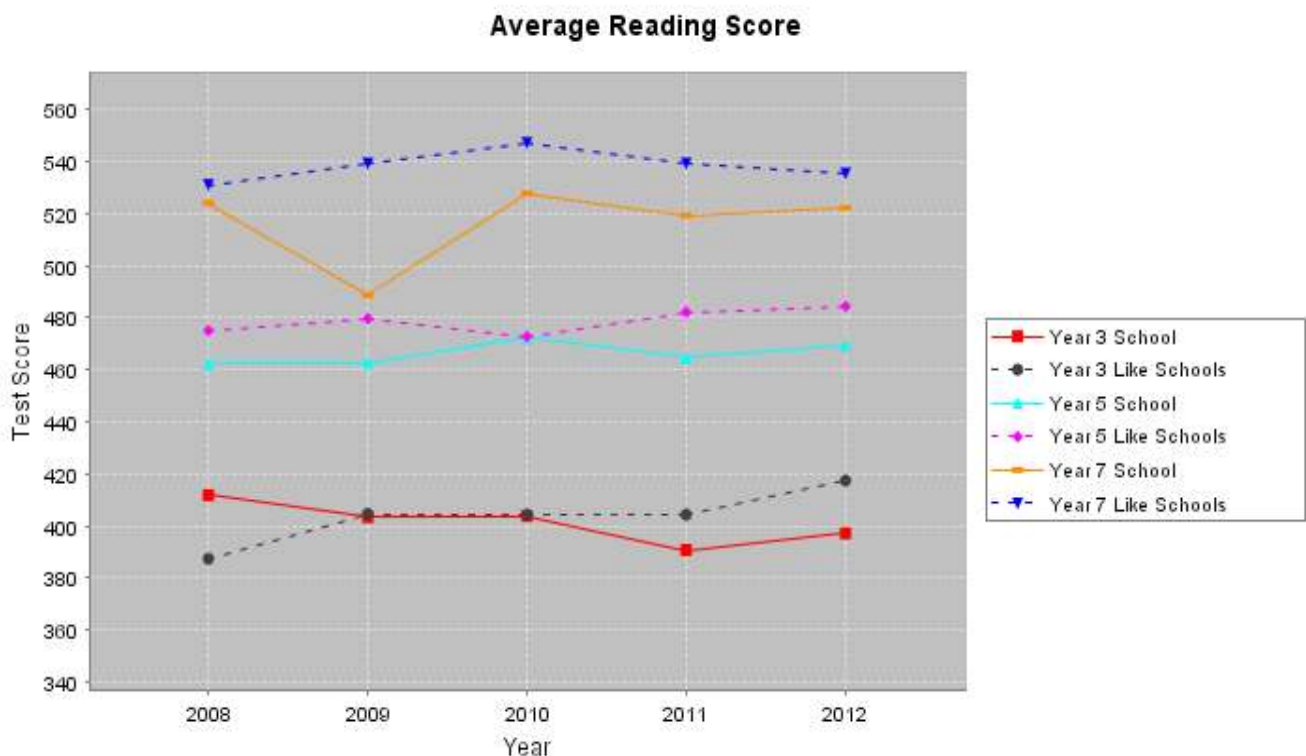
LONGITUDINAL SUMMARY

The graphs below show a comparison between student performances at Settlers Primary with student performance at a state level. It is important to note that these comparisons are made between the Western Australian Literacy and Numeracy Assessment (WALNA), Monitoring Standards in Education (MSE) and National Assessment Program Literacy and Numeracy (NAPLAN). The downward trend in both Numeracy and Reading is noted and whole school plans to change have been implemented.

Numeracy



Reading



MONITORING STANDARDS IN EDUCATION (MSE) – SCIENCE

Schools are chosen at random to participate in MSE testing. While the table below indicates acceptable levels of achievement, a comparison with 'like schools' highlights a need to increase the number of students achieving in the top 20 % and a reduction of students in the bottom 20%.

Percentage of students achieving at or above the WAMSE Test Standard

	Science			Society & Environment		
	2010	2011	2012	2010	2011	2012
Year 5	54%	46%	34%	61%	44%	28%
Year 7	55%	41%	35%	45%	34%	33%

PERCENTAGES OF STUDENTS IN TOP 20%, MIDDLE 60%, BOTTOM 20% OF THE STATE AND LIKE SCHOOLS

State	Year 5 Science					
	School			Like Schools		
	2010	2011	2012	2010	2011	2012
Top 20%	26 %	20 %	9 %	18 %	21 %	18 %
Middle 60%	64 %	59 %	75 %	63 %	65 %	72 %
Bottom 20%	10 %	21 %	16 %	19 %	13 %	10 %

State	Year 5 Society & Environment					
	School			Like Schools		
	2010	2011	2012	2010	2011	2012
Top 20%	33 %	17 %	15 %	24 %	24 %	20 %
Middle 60%	60 %	68 %	71 %	59 %	63 %	69 %
Bottom 20%	8 %	16 %	15 %	16 %	13 %	11 %

State	Year 7 Science					
	School			Like Schools		
	2010	2011	2012	2010	2011	2012
Top 20%	14 %	13 %	9 %	23 %	21 %	19 %
Middle 60%	64 %	61 %	66 %	62 %	63 %	67 %
Bottom 20%	23 %	26 %	24 %	15 %	15 %	13 %

State	Year 7 Society & Environment					
	School			Like Schools		
	2010	2011	2012	2010	2011	2012
Top 20%	16 %	10 %	9 %	24 %	22 %	23 %
Middle 60%	61 %	68 %	72 %	61 %	62 %	65 %
Bottom 20%	22 %	23 %	20 %	16 %	16 %	12 %

HIGHLIGHTS OF 2012

Academic standards and moderation across classes	Book Week
Book Fair	KidsMatter
AGQTP – Teacher Professional Development	Walk To School / Ride To School
Support A Reader	Graduation Dinner Dance
Scitech Excursion	ANZAC Service
Parent Information Sessions	Interschool Sports
NAIDOC Week	Guitar Group
Eagles/Fever Cup	Harmony Day
Glory Cup	Catholic Scripture classes
Swimming Carnival	Primary Music Institute – keyboard
Athletics Carnival	Point Peron Experience
Canberra/ Sydney Experience 2012	Summer Carnival
Point Peron Experience	Australian Electoral Commission Incursion
Literacy and Numeracy Week	Have Sum Fun Maths Competition
Fremantle Prison Excursion	Winter Carnival
Indonesian Incursion	Science Week
Settlers Veggie Garden	Culture Day Dress Up Fundraiser for Bali Sister School
Constable Care Visits	Cross Country
Crazy Hair Day	Choir WAGSMS Performance
Pyjama Day Dress up for the RSPCA	Indonesian Dance
Head Boy/Girl visit to Parliament House	iPad Demonstration at Central Office
Kalamunda History Village Excursion	
Millar Road Landfill Facility Excursion	
Kings Park Botanical Gardens & Naturescape Excursion	

INDEPENDENT PUBLIC SCHOOL STATUS FOR SETTLERS PRIMARY SCHOOL

At the beginning of the 2012 school year the School Council made a recommendation that the school investigate support for an application to participate in the Independent Public School (IPS) initiative. The school has been committed to a systematic and extensive strategy of educating and consulting with its staff and community on the topic of IPS. During Term One in 2012, the Principal worked with the Executive Team and School Council to ensure that all key stakeholders were well informed before seeking their support of the school's application to become an IPS.

This process included:

- Feature articles in school newsletters that highlighted key information and frequently asked questions with answers.
- Ongoing discussions between families, staff and the Principal to clarify and explain queries and concerns.
- Detailed discussion session led by the Principal at the February 24 and March 22, 2012 P&C meetings.
- In depth discussion at the School Council meeting on February 21, 2012 where a Principal from an IPS addressed the group. As a consequence it was agreed that the School Council wished to further investigate community support to apply for Independent Public School status.
- An IPS Information and Discussion Forum held at the school on March 27, 2012. Parents and staff were in attendance. Two Principals of Independent Public Schools attended at the Principal's invitation and spoke of their school's experiences as an IPS over two years and then took questions from the parents in attendance.
- On March 28, 2012, a confidential e-survey (Survey Monkey) was emailed to all parents seeking their position on the whether they supported the school's application to become IPS. 161 families responded with 144 (89%) in favour compared to 17 (11%) who were against. The survey closed on April 4, 2012.

Staff discussed the issue extensively both formally and informally. This included:

- A presentation and discussion on the topic at a School Development day on January 31, 2012 .
- Dissemination of relevant information from the IPS website to all staff.
- A further presentation and discussion on the topic at a staff meeting for all teaching and support

staff on February 22, 2012. A Principal and Teacher from an IPS attended the meeting and presented their perspective on the initiative and answered questions. Staff completed PMI charts highlighting opportunities and concerns.

- A final follow up discussion on the topic occurred at a staff meeting for teaching and support staff on March 21, 2012 where issues and concerns raised in the PMI were addressed and discussed.
- On March 21, 2012, a confidential e-survey (Survey Monkey) was emailed to all staff seeking their position on the whether they supported the school's application to become IPS. 67 staff members (80%) responded with 54 (81%) in favour compared to 13 (19%) who were against. The survey closed on April 4, 2012.
- As a consequence, at a meeting on 26 April, the School Council moved a motion in support for the school's intention to apply for Independent Public School status for 2013. An expression of interest was submitted prior to the May 10 closing date.

Settlers Primary School was ultimately successful in attaining Independent Public School Status for the 2013 school year. Our appointment to IPS gave us immediate flexibility to merit select new staff to the school and to plan to support our ongoing work with improving literacy and numeracy standards across the school.



Hon Peter Collier MLC, Mrs, Leanne Antulov, Mr Stephen Yates and Ms Sharyn O'Neill .

TEACHER PROFESSIONAL LEARNING 2012

In 2012 Teaching and Non-Teaching staff at Settlers Primary School attended a range of Professional Learning courses to assist the teaching and learning program. The total cost for the Professional Learning was \$10373.65. Teachers were supported in their professional learning by a fulltime Literacy Specialist teacher and a fulltime Numeracy Specialist teacher.

STUDENT ATTENDANCE SUMMARY FOR SETTLER'S PRIMARY SCHOOL 2012

Below outlines the student attendance summary for 2012. The graphs indicate that we are above the average by comparison to State Attendance. Individual children at risk of falling below 80% attendance are monitored by the attendance deputy.

STUDENT PARTICIPATION 2012 – ATTENDANCE – OVERALL

Primary Attendance Rates

	Attendance Rate	
	School	State
2010	94.4%	92.9%
2011	94.8%	92.7%
2012	93.9%	92.3%

Attendance % - Primary Year Levels

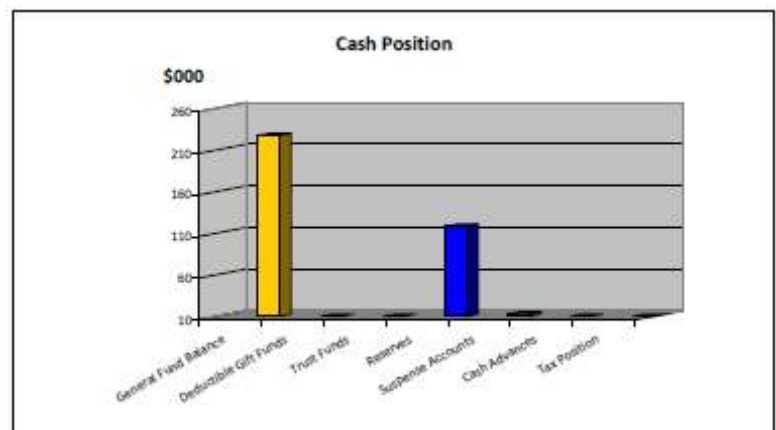
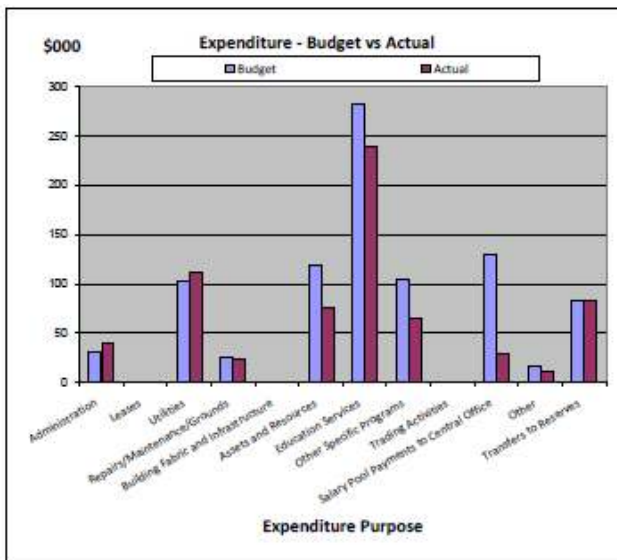
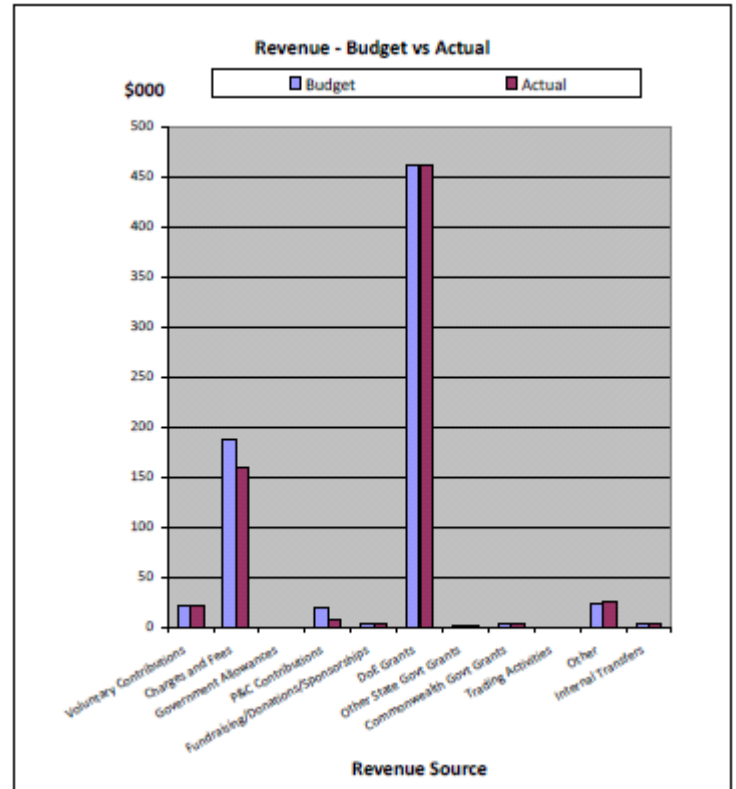
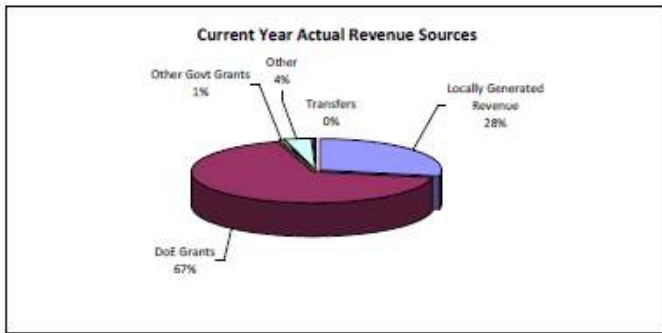
	Attendance Rate						
	Y01	Y02	Y03	Y04	Y05	Y06	Y07
2010	94%	94%	95%	95%	94%	95%	94%
2011	95%	94%	95%	95%	95%	95%	95%
2012	93%	94%	94%	94%	94%	94%	93%
State 2012	92%	92%	93%	93%	93%	93%	92%

In 2012, student attendance showed a slight decline on 2011 performance. We have implemented measures for improvement in 2013.

SCHOOL FINANCES 2012
FINANCIAL SUMMARY AS AT 31ST DECEMBER 2012

	Revenue - Cash	Budget	Actual
1	Voluntary Contributions	\$22,435.00	\$21,859.50
2	Charges and Fees	\$188,287.00	\$60,176.61
3	Government Allowances		
4	P&C Contributions	\$20,000.00	\$6,680.00
5	Fundraising/Donations/Sponsorships	4,306.00	\$4,086.39
6	DoE Grants	\$460,986.91	\$460,987.21
7	Other State Govt Grants	\$750.00	\$750.00
8	Commonwealth Govt Grants	\$3,274.00	\$3,274.08
9	Trading Activities		
10	Other	\$22,946.27	\$25,240.67
11	Internal Transfers	3,176.36	\$3,176.36
	Total	\$726,161.54	\$686,230.82
	Opening Balance	\$222,506.51	\$222,506.51
	Total Funds Available	\$948,668.05	\$908,737.33

	Expenditure	Budget	Actual
1	Administration	\$31,110.15	\$ 39,264.33
2	Leases		
3	Utilities	\$102,937.41	\$112,449.89
4	Repairs/Maintenance/Grounds	\$26,352.36	\$23,797.28
5	Building Fabric and Infrastructure		
6	Assets and Resources	\$119,551.77	\$76,770.53
7	Education Services	\$282,894.94	\$ 239,450.74
8	Other Specific Programs	\$104,770.36	\$64,381.28
9	Trading Activities		
10	Salary Pool Payments to Central Office	\$130,296.00	\$30,000.00
11	Other	\$16,945.50	\$11,376.45
12	Transfers to Reserves	\$84,000.00	\$84,000.00
	Total	\$898,858.49	\$681,490.50



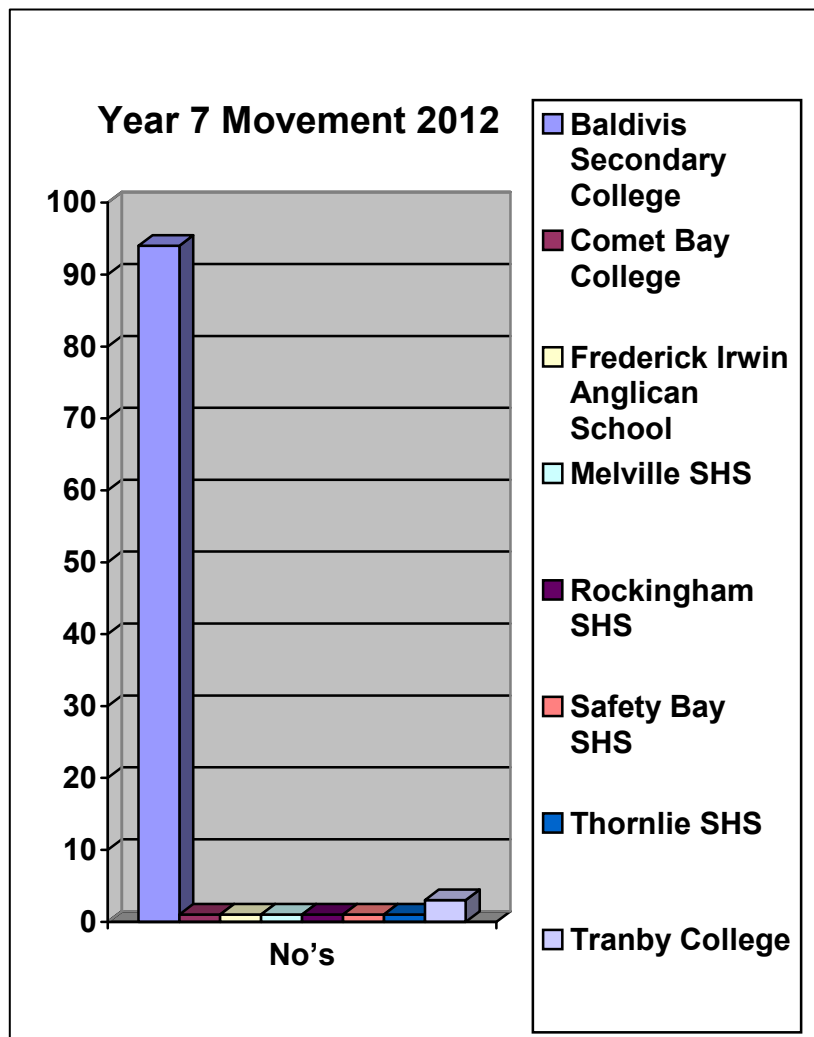
Cash Position as at:		31/12/2012
Bank Balance		\$335,319.08
Made up of:		-
1	General Fund Balance	\$227,246.83
2	Deductible Gift Funds	-
3	Trust Funds	-
4	Reserves	\$118,149.34
5	Suspense Accounts	\$13,052.91
6	Cash Advances	-
7	Tax Position	\$23,130.00
	Total Bank Balance	\$335,319.08

During 2012, the school received a full audit of Financial and Asset Management and was awarded a satisfactory assessment.

YEAR 7 MOVEMENT 2012 – 103 STUDENTS

School	No's
Baldivis Secondary College	94
Comet Bay College	1
Frederick Irwin Anglican School	1
Melville SHS	1
Rockingham SHS	1
Safety Bay SHS	1
Thornlie SHS	1
Tranby College	3
	103

In 2012 building commenced on Baldivis Secondary College, in preparation for year 8 student intake in 2013. The opening of a local government high school has made a dramatic change to our Year 7 movement with the majority of students enrolling at this new school.



ANALYSIS OF DATA

Settlers Primary School uses a variety of information to judge its performance. This includes previous WALNA information, NAPLAN and MSE testing as depicted in this report, formal semester reports, internal assessments, teacher judgments and anecdotal information. The data indicates that while there has been an improvement across some year levels, components of English and Mathematics must remain as priorities particularly reading, writing and spelling.

Accordingly, the analysis of data has led to further strategic planning as part of the overall school plan.

PRIORITIES FOR 2013

Based on the data analysed and teacher professional judgments, the priorities for 2013 are:

- English – Reading, Writing & Spelling
- Mathematics – Number
- Student Engagement and Wellbeing

STRATEGIC PLANNING

The strategic plan is available for the general community from the main office. The Strategic Plan connects planning at the whole school level and sets directions for improvement based on available data. The Strategic Plan has been endorsed by the School Council and in turn provides the basis for the Operational Plan and classroom planning.